

Welcome to our Schools Fundraising Pack

Inside we have lots of ideas to help you and your school raise money to support everyone at Medical Detection Dogs.



Medical 
Detection Dogs




Patron: HRH The Duchess of Cornwall

About Medical Detection Dogs

Medical Detection Dogs is a growing charity based in Great Horwood, that uses one of the very special powers that a dog has to help people that are, or may become affected by an illness. We use dogs to find, and tell us about certain human diseases, by using their noses. They "Sniff" the smell of some diseases and then they "tell" us what they've found.

This work is only made possible because of donations from our generous supporters in schools like yours. We are 100% reliant on public donations and we need your help.

How your money could help:

	Dog Tag	£10
	Dog Crate	£40
	Puppy Starter Kit	£200
	Ongoing yearly cost for a Medical Alert Assistance Dog	£750
	Name a Puppy (£4000 will enable Medical Detection Dogs to purchase a Puppy, to buy its initial equipment, walk it for a minimum of twelve months, pay for its micro-chipping and general health care and to cover its insurance for the year)	£4,000

Fundraising is Fun

We want you to enjoy fundraising for Medical Detection Dogs. So, this pack is full of lots of different ideas to put the fun into *fundraising*. You can have a great time whilst also making a difference to others.

We have included some real-life stories about the difference school fundraising makes and the types of people that your money could help. We have included a few ideas of different activities that the students can take part in to raise money for us.



Why not name a puppy after your school?

For more information please visit www.medicaldetectiondogs.org.uk/name-a-puppy

Fundraising at School – some Fundraising Ideas

Dress up as your hero

Whether it's a superhero or a hero from your favourite book, transform yourself and raise money for us.

Fancy Dress Day

Lose the ties and ask the students to pay £2 to have a fun dress down day. You could even go Red for Medical Detection Dogs.

SHHHHH

Your students could ask their family to sponsor them to stay silent for an hour or two. Or could they be challenged to stay quiet for a whole day?

Have a bake sale

Its bake-off time! Get the students to bake some treats to sell at school, and invite their friends, family and your local community. You can download our Bake Sale Pack for more tips at www.medicaldetectiondogs.org.uk/fundraising

Hold a Sweepstake

Why not use an upcoming sports event to raise money as a class? Create a sweepstake and give everyone the chance to pick a country, team or player in exchange for a donation.

Take on a challenge

Let the students choose a challenge and ask their parents to sponsor them. It could be anything from giving up chocolate to cycling to school for the week.

Ask for donations for Medical Detection Dogs at your school concert or play

Putting on a production? Why not ask for donations to go towards Medical Detection Dogs.



How your fundraising really helps

Jack and Medical Alert Assistance Dog Roots



This is Jack and his dog Roots. Jack has type 1 diabetes, and until he had his assistance dog his life was very different indeed. Jack could often become quite ill with no notice at all. This would often end up with him having to be rushed into hospital, and meant that he couldn't often do things that normal healthy kids like to do. Roots has been trained to smell the changes in Jack that are a warning sign that he could become ill, and he tells Jack that he needs to take some action to stop this from happening. Other humans can't smell these changes, so Jack is very dependent on Roots' very keen sense of smell to tell him what's going on.

Yasmin and Medical Alert Assistance Dog Nano

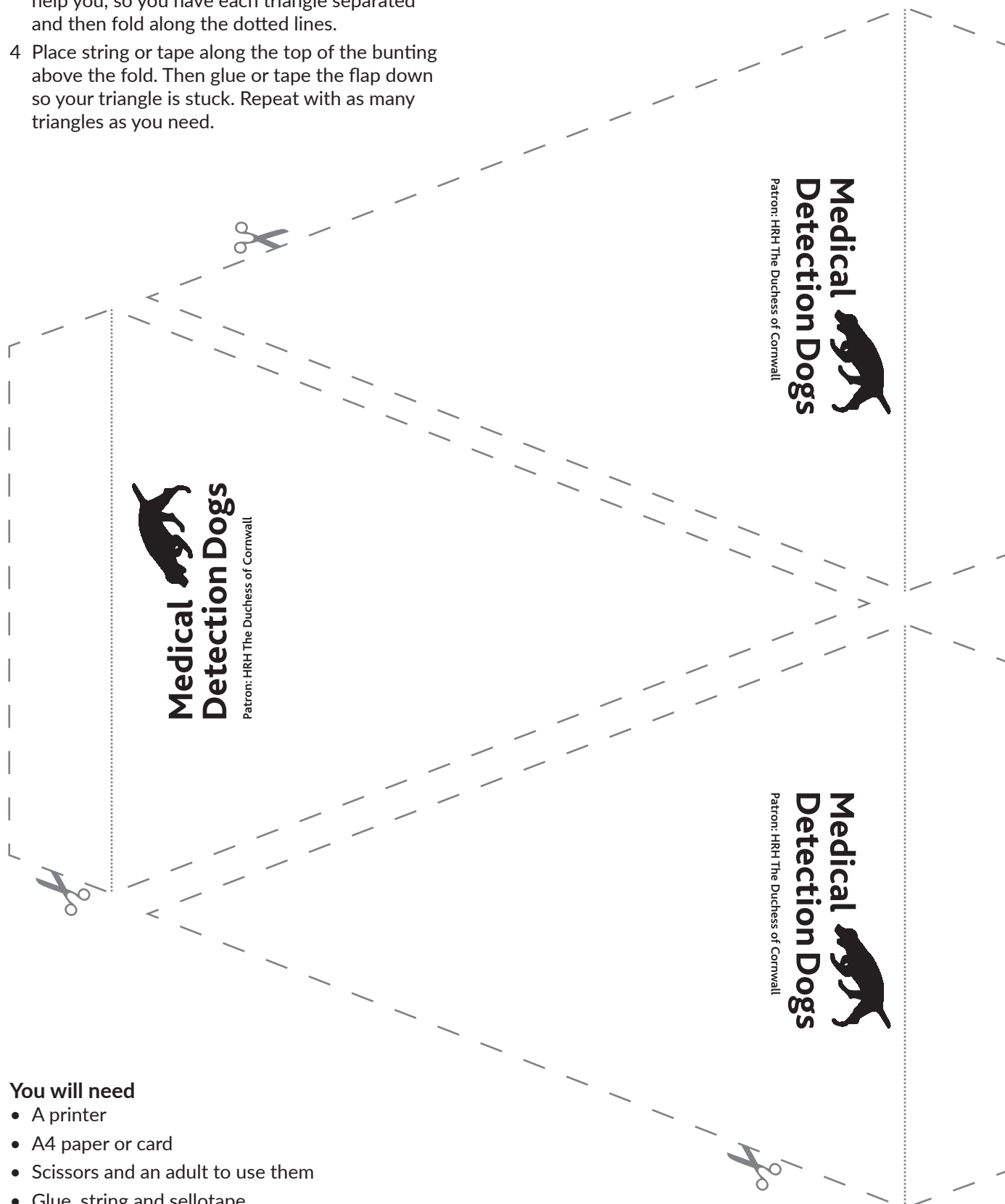


Yasmin has a very bad allergy to nuts, even tiny traces of nuts in the air or on a surface that she touches can cause her body to go into shock. Nano has been trained to smell out even the very tiniest particles of nuts in any area that Yasmin will be spending time and warn her not to go there. This even includes going onto an aeroplane before Yasmin goes to her seat, to make sure she is safe, or smelling a plate of food in a restaurant that she is about to eat, to make sure it is safe for her to eat.

Bunting

Instructions

- 1 Print this page out as many times as you need it. You can print it out on plain paper or card.
- 2 Colour in or paint the bunting as bright as you like, you can even write messages about why your school is holding an event.
- 3 Cut along the dashed lines, or ask an adult to help you, so you have each triangle separated and then fold along the dotted lines.
- 4 Place string or tape along the top of the bunting above the fold. Then glue or tape the flap down so your triangle is stuck. Repeat with as many triangles as you need.



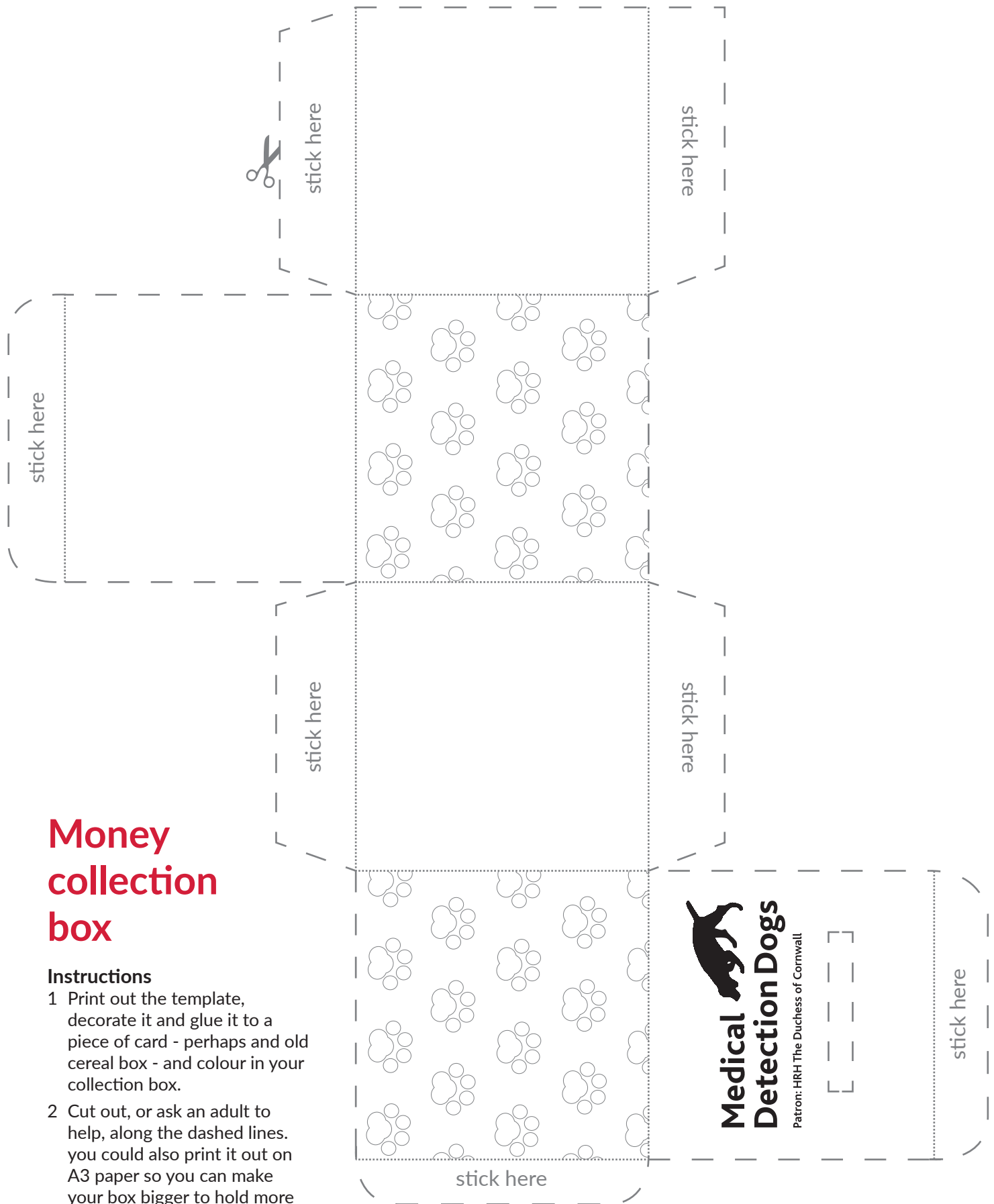
You will need

- A printer
- A4 paper or card
- Scissors and an adult to use them
- Glue, string and sellotape
- Coloured pens, pencils or crayons

Money collection box

Instructions

- 1 Print out the template, decorate it and glue it to a piece of card - perhaps an old cereal box - and colour in your collection box.
- 2 Cut out, or ask an adult to help, along the dashed lines. you could also print it out on A3 paper so you can make your box bigger to hold more donations. Don't forget to cut out the coin slot!
- 3 Fold along the dotted lines and apply glue or sellotape to the tabs which say "glue here".
- 4 Assemble your collection box.



You will need

- A printer
- A4 paper or card
- Scissors and an adult to use them
- Glue or sellotape
- Coloured pens, pencils or crayons

Thank you for supporting



3 Millfield, Greenway Business Park, Winslow Road,
Great Horwood, Milton Keynes, MK17 0NP

operations@medicaldetectiondogs.org.uk
www.medicaldetectiondogs.org.uk | 01296 655888



Registered Charity in England and Wales No. 1124533 and in Scotland No. SC044434



Registered with
**FUNDRAISING
REGULATOR**